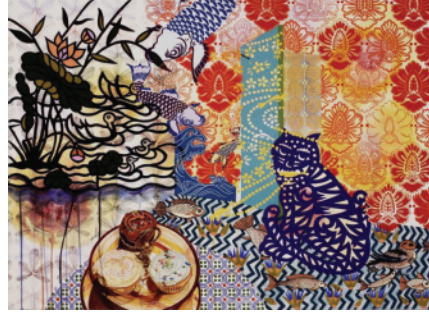


## KIRA NAM GREENE

CatCake  
2010



Born in Seoul, Korea, Greene received her BFA from San Francisco Art Institute and her MFA from the School of Visual Arts. She had her first solo exhibition in New York in 2010 through A.I.R. Gallery's Fellowship Program. In 2011 she participated in Artists in the Marketplace (AIM) at Bronx Museum of Art. She has exhibited at the Noyes Museum of Art, NJ; the Sheldon Museum of Art, NE; The Bronx Museum of Art, NY; the Nathan Cummings Foundation, NY; Beard & Weil Galleries, Wheaton College, MA; Cheryl McGinnis Gallery, NY; and SOMArts Cultural Center, CA among other venues. She lives and works in New York.

## JAE YONG CHUN

Text-1 (series of snaps)  
2012



1977 Born in Seoul, Korea. 1999 BFA School of Visual Arts, New York, NY. As an art director, filmmaker, photographer, artist and farmer, there is no boundary in his work. He conducts global impression with "Culture". He makes retail space representations of the experimental young artists and interacts with a variety of artistic sensibility. Also he represents farmers, to manage the farmers' "Arts and Harvest". And he manages the Paddy Art School" which is a cultural space providing eco-friendly and eco-theme activities.

## KYUNG JEON

Waterlilies Gliding Parachutes  
2012



Jeon was born in 1975 in Jersey City, New Jersey, and received her MFA in 2005 from the School of Visual Arts, NY. In 2005 she was a recipient of the Scope Emerging Art Grant, and was honored the Skowhegan School of Painting and Sculpture Fellowship in 2003. Her work has been included in museum and gallery exhibitions in Asia, South America, Europe and the United States, including Leeum, Samsung Museum of Art in Seoul and the Aldrich Museum in Ridgefield, Connecticut. Jeon lives and works in New York.

## ROMAN M. HRAB

Ashokan Mirror Frack-tal  
2012



Hrab is an artist who resides in the Catskills in upstate New York. He currently serves as Director of Operations for the Studio Arts Department at Bard College. Hrab received a BFA in Sculpture from the School of Visual Arts in 1990. He is a fellow of the 2009 NYFA MARK program, and a recipient of a 2006 Saltonstall Foundation fellowship and residency. Hrab has recently shown work in group and solo exhibitions at Roos Arts Gallery in Rosendale, the Islip Art Museum, the John Davis Gallery in Hudson, and the Columbia-Greene Community College in Hudson.

## YOUNG TAE KIM

Shadow of Time -Mountain#1  
2013



of photography. The 'Breath Series' depicts nature's struggle to hold its vitality in a poor environment of polluted streams in the lower half of the river. The fundamental desires of humans are expressed through dreamlike compositions with rivers, oceans and islands in the 'Shadow Land Series'. 'Shadow of Time' portrays Gwangju's most revered mountain, Mudeungsan as a theme and it will also be on view in this exhibition.

## SUN DOO KIM



He is a professor of Art and Painting at Chung Ang University in Korea; also a contemporary painter but a student of classical Korean Art styles as well. Many of his works adopt the traditional ink and Hanji paper style of the Joseon Dynasty, but with a freeform of vitality and creativity. Kim's artistic grounding paired with vision led him to create reproductions and original compositions in the style of 19th century Korean master, Jang Seung-Ub, for use in the acclaimed 2002 film, "Chihwaseon." The ethereal styles of both Jang and Kim evoke a flowing dreamscape of the natural world, simultaneously set in tradition and striving to break free of all artistic conventions and brings them into this time.

# POLLINATION

Overlappings in Time and in Place

"Pollination: Overlappings in Time and in Place"

September 11 – October 25, 2013

Opening Reception: Wed, September 11th, 6-8pm

Gallery Korea of the Korean Cultural Service NY

460 Park Avenue 6th Floor, New York, NY 10022

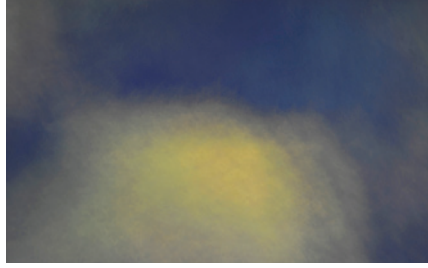
**JONGIL MA**



Ma received a BFA from the School of Visual Arts in 2002. He has participated in public art projects sponsored by the Ministry of Culture & Tourism of Korea in Kwangju and Damyang.

**GYU CHAE LA**

*Bamboo#031*  
2010



La graduated from Gwangju University with MFA in Photography. He has exhibited in various art fairs, and solo and group shows in Gwangju, Damyang, and Seoul. In 2010, he was awarded 'Today's Artist' by the renowned Monthly Photography Art Magazine. Recently, his essay 'Juknokwon' was selected as part of modern literature in Korea. La has published various photograph collections and photo essays and is gradually expanding his field as a multifaceted artist.

**HEIN KOH**

*Animus/Anima*  
2012



Born in Jersey City, NJ, Koh is an artist based in Brooklyn, NY. She holds two BAs from Dartmouth College, in Studio Art and Psychology, and received her MFA in Painting / Printmaking from Yale. She is a recipient of a Mid-Atlantic Arts Foundation Grant, and an alumna of the Artists in the Marketplace program at the Bronx Museum of the Arts, which culminated in a concurrent exhibition at the Bronx Museum and Wave Hill, with a catalog. Her work has received press in The New York Times, The Philadelphia Inquirer, The Brooklyn Rail, and The Huffington Post, amongst other publications.

**GEORGE RAGGETT**

*LEC12*



He received his BA from the College of Creative Studies at UC Santa Barbara and a Masters from Bard College. Prior to the Museum he has shown at the Hammer Museum and the Happy Lion Gallery in Los Angeles and been included in exhibitions at White Columns and Triple Candie in New York. In addition to curating several exhibitions, and with collaborators, George ran an alternative Gallery called "Crockett Rodeo" in Seattle and launched a bi-coastal sculpture project called "Gone Wild". Recent activity of the Museum of Commerce includes inclusion in exhibitions at Art in General (New York), Soloway (Brooklyn), The Lab (Boston), Romer Young Gallery (San Francisco), Mandrake (Los Angeles) and the Scripps Institute of Oceanography (La Jolla). The Museum of Commerce resides in Brooklyn, NY.

**LEE PUCKETT**



Born in Alabama, Puckett attended the School of Visual Arts and received an MFA from Bard College in 2011. Recent group shows include: "I am sitting in a room different room than the one you are in now" at 109 Gallery, Brooklyn; "Waived Gallery presents" at Jack Chiles Gallery, NY; and "How to change a tire" Bard MFA Thesis show, Redhook, NY. He currently lives and works in Brooklyn, NY.

He had a solo exhibition at Roger Smith Hotel Gallery in Manhattan; participated in "Jamaica Flux: Workspaces & Windows" at Jamaica Center For Arts & Learning in Queens; and LMCC Governors Island Project in 2010. His work has been featured in international exhibitions including the 2009 International Incheon Women Artist's Biennale in Korea and the Lodz Biennale 2010 in Poland.

**ELIZABETH WINTON**

*UntitledRed*



Nashville, TN. Her most recent solo show, curated by Douglas Dunn, was at CUE Art Foundation in 2011, in New York followed by a collaborative installation project at the Lab Gallery at the Roger Smith Hotel in New York, and a group exhibition in 2012 at Brooklyn Fire Proof.

Winton has exhibited her work throughout the United States & Internationally, including shows at the Lower East Side Printshop, New York, NY; Kolok Gallery, North Adams, MA; Margaret Bodell Gallery, New York, NY; and the Ruby Green Contemporary Art Center,

**JUUU U**

*GetInLine*



1982 Born in Seoul, Korea. 2001 BA in Craft, Konkuk University in Seoul, Korea. 2011 MFA in Fine Art, Goldsmiths University, London, UK. Having worked with colorful flowery installation to mimic particular popular cultural representation, she has collected large amount of baby dresses in antic vintage shop in England to offer a conversation about 'missing and being alienated'. She had exhibitions Wolverhampton Art Gallery, UK; Inspace Gallery, Beijing, China; and several exhibitions in Seoul including Farming is Art Gallery and many.

# POLLINATION

## Overlappings in Time and in Place

"Pollination: Overlappings in Time and in Place"

September 11 – October 25, 2013

Opening Reception: Wed, September 11th, 6-8pm

Gallery Korea of the Korean Cultural Service NY

460 Park Avenue 6th Floor, New York, NY 10022